

# Plastics

December 2021

## HOTLINE

rdgmedia  
PUBLICATION

In This Issue: ACL/Staticide 15 | Cold Shot Chillers 18 | Globeius 2 | Progressive Components 13

## BARREL BORE GAUGES

Checks IDs  $\frac{3}{4}$ " – 24"

Checks barrel lengths to 30'



Over 30 years experience designing, manufacturing,  
rebuilding, Screws and Barrels.

For Injection, extrusion and mold molding.

**FLITE**  
TECHNOLOGY

[www.flitetech.com](http://www.flitetech.com)

toll free: (800) 327-9310

phone: (321) 631-2050

fax: (321) 636-3508

## BETTER in Maintenance, Repair and Operations



**BETTER** in parts separation and high efficiency filling and storage machines



**crizaf**



Scan to watch video



**BETTER** in regrind with innovative slow speed grinding



Scan to watch video



**BETTER** in confined spaces load lifting with mini cranes designed specifically for the molding industry



Scan to watch video

**BETTER** in mold installation with our range of power clamps that allow for quicker and more efficient mold changes

**MOULDPRO®**



**BETTER** in stripped thread repair with the only lifetime guarantee



Scan to watch video



**RACKSTORAGE**  
SPECIALIST SUPPLIER OF STORAGE SOLUTIONS

**BETTER** in mold storage with specialized mold rack systems saving up to 80% space

Scan to watch video



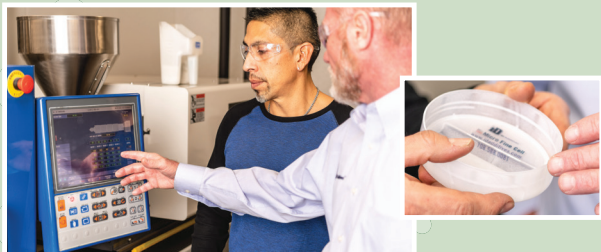
Tel.: (305)889-1782  
Email: info@globeius.com





# HAPPY Holidays

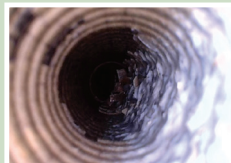
Save Time and Improve Productivity with iD Additives



## iD Foaming Agents

### Faster Cycle Times – Material Savings

- Cycle Reduction
- Weight Reduction
- Warp Reduction
- Improved Processing



Heat Exchanger Before



Heat Exchanger After

## iD Eco-PR 360

### Safe and Effective Descaling System

- Prevents rust within cooling passages
- Ready-to-use
- Water based chemical
- Runs off compressed air – No electrical needed



*"Eco-Pro will keep your cooling lines clean and your molds running better"*

MoldTrax Maintenance Solutions, Ashland, OH



## iD Purge

### Eco-Friendly and Easy to Use

- Full line of purge compounds
- Reduces resin required to purge
- Mechanical grades for tougher clean outs
- Minimizes process equipment down-time
- All natural ingredients



## QUICKSHOTS

### Drop. Purge. Save.

- Single-dose purge compounds
- Works with **any resin**
- Minimized down-time
- Made in the USA
- FDA compliant

*"QuickShots reduced scrap by up to 60%, slashed downtime by 55%, and helped us achieve 63% total cost savings"*

Blackhawk Molding, Sparks, NV

iD Additives offers **FREE samples** on all of our products and technical support from our experts!

**Contact us today!**



**iD Additives™**

Connect  
With Us!



Check Out Our  
YouTube Videos!



Unmatched Technical Support for Innovative Products!

iD Additives, Inc • 512 W Burlington Ave., La Grange, IL 60525 • (708) 588-0081 • iDadditives.com

# INNOVATIVE ROBOTICS LINE FOR PLASTICS INJECTION MOLDING !

## H5 Series !

Heavy Payload , Low ceiling !



## H5 SERIES

- Molding Machine Size : 750 ~ 4,000 Tons
- Full Servo Robot up with 5 Axis AC Digital Servo.
- Industry First !. raverse ( 1 Axis ) + Articulated Robot ( 4 Axis )
- Heavy Payload, Low ceiling & Less foot print
- Application : Basic Take out, Stacking, Insert Over Molding, Gate cutting, 2ndary automation!
- Features : High Strength Steel Frame, Powerful AC servo Motor, High Precision NSK Liner Motion Guide.

## H5-C10 Controller

- 7" Wide Touch Screen
- ARM Cortex-A8 CPU, DDR2 512 MB
- Body Attached I.O box
- High-Performance EtherCAT Communication
- User-Friendly Icon-Based Control Screen.
- Developed with 30 years experience in the plastics molding industry.
- CE Certified Components, ISO 9001 Quality Production.

## EPIK SERIES ( Single or Double Arm Model )

- Molding Machine Size : 200 ~ 800 Tons
- Single or Double Arm Model ( 3~7 Axis AC Servo Control )
- Control : HYK-70 ( Keba ) Controller
- Application : Basic Take out, Stacking, Insert Over Molding, In Mold Labeling and Other 2ndary Automation, Sprue Picking
- Features : High Strength Steel Frame, High Strength AC servo Motor, Low Noise NSK Liner Motion Guide

## HYK-70 ( KEBA ) Controller

- 7" Wide Touch Screen
- 1.2 GHz, ARM Cortex-A9 Core
- Ergonomic Design,
- High-Performance EtherCAT Communication
- High Quality Components, ISO 9001 Quality Production.
- User-Friendly Icon-Based Control Screen.
- Mode and teaching type programming for beginner mode
- Line by line programming for expert mode

ISO9001 QUALITY

CE CERTIFIED



## EPIK-W SERIES ( Flat Front Style Robot )

- Molding Machine Size : 400 ~ 4,000 Tons
- Flat Front style Robot with Single Arm Model
- Control : HYK-70 ( KEBA ) Controller
- Application : Basic Take out, Stacking, Insert Over Molding, In Mold Labeling and Other 2ndary Automation.
- Features : Longer parts handling, Low ceiling.



## UNIK- SERIES ( Mini Servo Robot)

- Molding Machine Size : 50 ~ 200 Tons
- Single or Double Arm Model
- Control : HYK-70 ( KEBA ) Controller
- Application : Take out, Stacking, Gate cutting, 2ndary Automation, Light Application.



HYROBOTICS CORP.

5319 BROWN AVE. ST. LOUIS MO 63120, USA

WWW.HYROBOTICS.COM



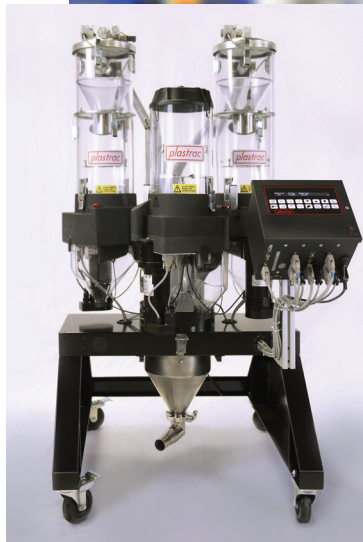


*The perfect blend. Every time.*

## More than fair shares.

**Cart-based Plastrac blenders move between machines to simplify color changes and reduce scrap, especially on short runs.**

To help custom molders achieve extreme efficiency, Plastrac offers fully independent single and dual cart-based blenders that can be shared between multiple machines. They are based on the value proposition of a single virgin feeder and two different color feeders with shared controller and blower system, typically operating independently with either manual color filling or an automated color loader. Operators will be able to switch colors electronically. All parts of our cart systems are easy to connect and disconnect for fast changeovers and setups.



## Easy does it blending.

**Now. And down the road.**



Plastrac designs and builds blenders to uncomplicate life for our customers. They are simple to set up. Simple to operate. Simple to adapt in the field. Simple to expand in the future. Let's say you buy a two-component (color + additive) system now, but a few years later, you need to make it a multi-component system. Plastrac blenders are all entirely modular, so you won't be locked into the original configuration if your needs change or grow. What's more, all our parts, mechanical and electronic, are

always well stocked, because we don't think your present or future operations should include downtime.

## On the fly Color Changes. PDQ.

There are a lot of features that distinguish a Plastrac blender, but none greater than the ability to change colors as often and as quickly as customer orders demand it. The secret is our level-sensing vane switch (standard on every single blender). Harried processors can hurry up color changes by swapping top castings without any need for cable removal.



**plastrac**



610-356-3000 • [Plastrac.com](http://Plastrac.com)

# Design drives change.



## NEO · H

### New Premium Two-platen IMM

The NEO · H series is the latest generation of two-platen machine by Tederic. A combination of broad experience and innovative patented technological developments results in the natural evolution of this premium two platen machine.

Excellent specifications, a standard electric screw drive, Industry 4.0 ready controller, and leading brand componentry, all used in conjunction with cutting-edge design, produce a machine that is perfect for even the most demanding applications.

Clamping Force: 550t – 7000t

Stable · Precise · Efficient · Energy-saving

Main application sectors



Automotive



Home appliances



Logistics



Environmental  
Protection



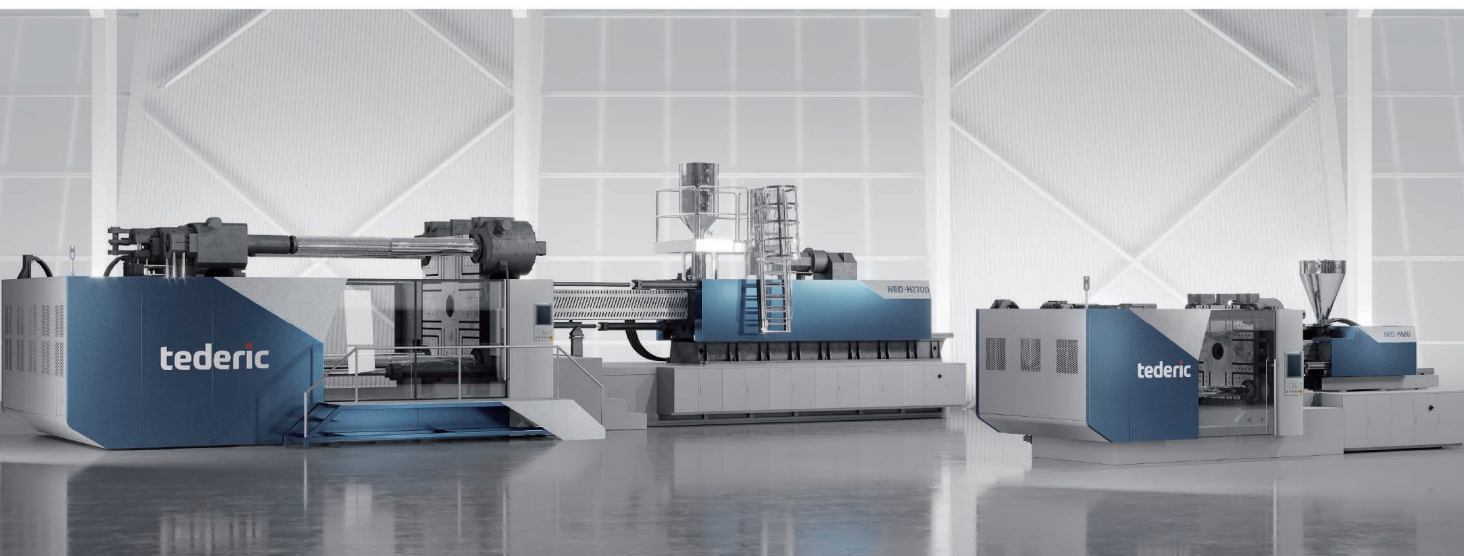
Commodity

[www.tedericglobal.com](http://www.tedericglobal.com)

Tederic North America

t: (941) 323-9081

e: [info@tederic-na.com](mailto:info@tederic-na.com)





# Reveal the Quality of your Mold Cooling

## Tracer<sup>®</sup><sub>VM</sub> Flowmeters

### Local



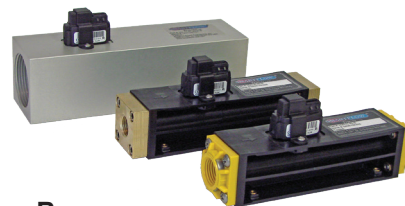
### Tracer<sub>VM</sub> with User Interface displays cooling water condition

- FCI Technology (Fluid Condition Indication)
- Reynolds Number Display
- Flow and Temperature Display
- Accurate Vortex Shedding Sensor
- Flow Ranges 1 to 15LPM through 10 to 200LPM
- High Visibility Color LCD Screen
- Totalizing Function
- Connects to Data Acquisition Systems using Voltage Outputs
- Programmable Switch for Process Limits

### Remote



### PC, PLC or Mobile Device



### Tracer<sub>VM</sub> Base

- Flow Rate and Temperature Analog Output

### Use with SMARTLINK<sup>®</sup> Tracer<sub>VM</sub> Interface

- View Multiple Meters on One Screen
- Data Logging for Process Validation



*In Support of Scientific Cooling<sup>SM</sup> Principles*

**burger & brown**

4500 E 142nd Street  
Grandview MO 64030 USA  
816-878-6675



**SMARTFLOW<sup>®</sup>**

engineering, inc.

[www.smartflow-usa.com](http://www.smartflow-usa.com)

## Stay Calm, Cool & Collected

### with Tracer<sup>®</sup><sub>VM</sub> DuraGuard<sup>®</sup>

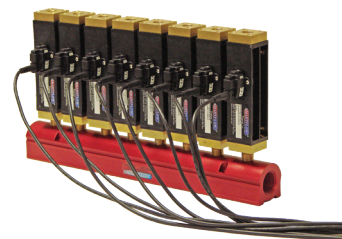
Your bank of **Tracer<sub>VM</sub>** flowmeters or flow regulators is Calm, Cool & Collected when assembled to a Smartflow<sup>®</sup> manifold with **DuraGuard**.

### Tracer<sub>VM</sub> DuraGuard

- Protects flow and temperature sensors
- Manages flowmeter cables
- Provides neat and clean installation
- Resists corrosion with stainless steel construction

Applies to aluminum or stainless steel manifold assemblies with Tracer<sub>VM</sub> flowmeters and Delta-Q<sup>®</sup> flow regulators.

*Manual control of independent cooling circuits provides flow balancing across the injection mold for even part cooling and improved molded part quality.*

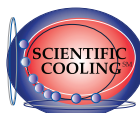


*Follow QR code for more information*



*In Support of Scientific Cooling<sup>SM</sup> Principles*

**burger & brown** engineering, inc.



**SMARTFLOW<sup>®</sup>**

[www.smartflow-usa.com](http://www.smartflow-usa.com)

# Temperature Control Units

**Water Units : up to 300°F at 35-100 GPM**

**Oil Units : up to 500°F at 20-100 GPM**

Over 30 Years Experience  
in Temperature Control  
Unit Production!



Low capital investment, simple start up & operation, easy to maintain, microprocessor control instruments that are easy to read and understand, factory sales and service support along with new product warranties are the reasons why TempTek water and oil products are superior. Call now for Pricing & Delivery!

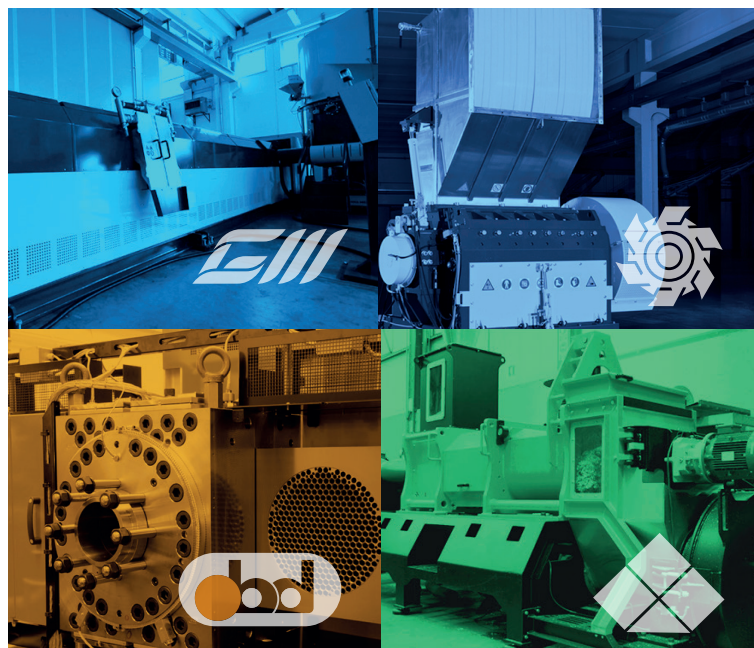
**317-887-6352**

**www.TempTek.com**

525 East Stop 18 Road  
Greenwood Indiana 46143

**TEMPTEK**

**www.irecyclingsolutions.com**



**We are  
more than  
just a sales  
agency**

Exclusive agency for select manufacturers of plastics recycling and extrusion systems, filtration systems, washing systems, drying and size reduction equipment. Quality and providing customized solutions are our strengths.

**innovative**  
RECYCLING SOLUTIONS

Innovative Recycling Solutions LLC, 59 Concourse Way, Building E, Greer, SC 29650  
Tel. 864 675-0775 TOLL FREE: 877 675-0775 office@irecyclingsolutions.com





# Level and Flow Solutions

For over 60 years, **Monitor Technologies, LLC** has been offering practical solutions for **level indication, continuous level measurement and solids flow monitoring** relating to the storage & processing of most plastic powder, granule, pellet & regrind materials.

Available with **SiloTrack™ CLOUD Remote Inventory Mgmt.**

**DuraVibe™**  
Vibratory Style  
Bin Level Indicators

**SiloPatrol®**  
"Smart"  
Plumb Bob

**SFD-2**  
Solids Flow  
Monitor  
(Flow / No Flow)

**SFI**  
Solids Flow  
Monitor  
W/ Analog Output

**QuantiMass™**  
In-Line Solids Flow  
Measurement

**Solids Flow Monitors**  
Ideal for Pneumatic  
Railcar Unloading Systems!

[www.monitortech.com](http://www.monitortech.com) ▼ [monitor@monitortech.com](mailto:monitor@monitortech.com) ▼ 1-800-766-6486

## Highest Conveying Capacity

- Continuous push / pull conveying
- Plastic pellets, powders & fly ash
- Exclusive dual blower design
- Low temperature rise
- Blow to silos / fill trucks & railcars
- Up to 135,000 lbs / hr thru 6" line



## Christianson

Pneumatic Conveying Equipment

**800-328-8896**

[www.christianson.com](http://www.christianson.com)





# ASK FOR CLEAN PLAST® PURGE COMPOUNDS AND NEWLY RELEASED MOLD CARE PRODUCTS!



“DON’T just purge to purge, PURGE TO CLEAN using the original **CLEAN PLAST®** purging compound. Contact me today to arrange for a FREE purge trial at your plant and see the difference a **CLEAN PLAST®** PURGE will make.” –*Rochelle Lemieux, President*

- **CLEAN PLAST®** is safe to Purge through Hot Runners including pre-form molds!
- **CLEAN PLAST®** is safe for all resins including PET Bottle grade.
- **CLEAN PLAST®** has no harmful abrasives or solvents!
- **CLEAN PLAST®** ingredients are GRAS by the FDA.
- **CLEAN PLAST®** cleans Screws, Barrels, Accumulators, Hot Runners and Stack Molds.
- **CLEAN PLAST®** can be used in Injection Molding, Extrusion, and Blow Molding.







## MOLD CARE



Along with purging products, Clean Plast® also offers a line of mold care sprays that can be used for mold and tool applications. Our mold care products consist of: CPMC100 Mold Cleaner and Degreaser, our environmentally friendly CPMC101 Go Green® Mold Cleaner, CPMC200 Mold Rust Preventive, CPMC300 Heavy-Duty Mold Release, CPMC301 Food Safe Mold Release, and CPMC400 Silicone Mold Release. Contact us for more information and a free sample!

Visit us at: [www.CLEANPLAST.com](http://www.CLEANPLAST.com)

*A 100% Woman Owned Business*





# RAPISTAK CORPORATION

Go from this...



Our mold management systems are designed to save you space, time and money.

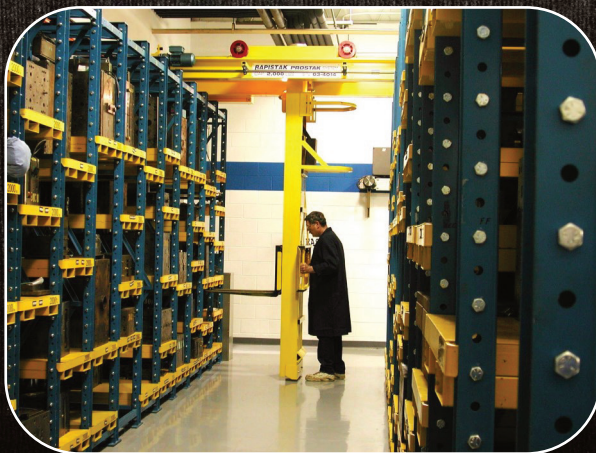
Visit our website or give us a call to learn more about how we can help you with your die or mold management needs.

716-822-2804 | [www.rapistak.com](http://www.rapistak.com)

## MORE THAN JUST STORAGE!

- \* Manage your inventory
- \* Become better organized
- \* Protect your investment
- \* Maximize cube utilization
- \* Create a safer working environment

To this!



# Champions

in Plastics

# Plastics

## HOTLINE

[www.plasticshotline.com/champions](http://www.plasticshotline.com/champions)

Plastics Hotline would like to thank each of these companies for participating in our first Champions in Plastics Program. Please visit their online profiles at [www.plasticshotline.com/champions](http://www.plasticshotline.com/champions) and see how each company is a Champion in Plastics!

**plastiXs**<sup>®</sup>  
manufacturing solutions

**Virtus**  
Equipment

**CLEAN PLAST**<sup>®</sup>



iD Additives<sup>™</sup>



The Home of Size Reduction

**i7innovative**  
RECYCLING SOLUTIONS



# Water Chillers

Over 30 Years  
Experience in  
Chiller Production!

**Portable Chillers : .25-40 tons at .7-92 GPM**

Indoor Portable Chiller ... Air or Water Cooled ... some units in stock to 20 tons.

**Central Chillers : 5-180 tons at 48-540 GPM**

Indoor & Outdoor units ... Air or Water Cooled

Complete chiller & pump system packages or stand alone chilling modules.



Portable Chillers

Central Chillers

Low capital investment, simple start up & operation, easy to maintain, microprocessor control instruments that are easy to read and understand, factory sales and service support along with new product warranties are the reasons why TempTek water products are superior. Call now for Pricing & Delivery!

**317-887-6352**

**www.TempTek.com**

525 East Stop 18 Road  
Greenwood Indiana 46143

**TEMPTEK**

## IN STOCK... READY TO SHIP!

### 2022 REPLACEMENT DATE PLUGS

Whether you are looking to reorder Progressive plugs from last year or have molds that contain plugs from other sources, we've got you covered.

- Largest selection of date marking parts in the world
- Plugs are etched for quick identification and reordering
- Compatible with US, Europe, and Asia standards

Give us a call at 1-800-269-6653 to order yours today.

**PROGRESSIVE**  
**C O M P O N E N T S**

**WWW.PROCOMPS.COM/DATE**



## RECHNER SENSORS CAPACITIVE LEVEL CONTROL



[www.rechner.com](http://www.rechner.com) - 1-800-544-4106 - Sanborn, NY

# IMPROVED PROCESS EFFICIENCY

#### DURABILITY

Our extruders provide a greater stability and longer system life that help maintain a healthy bottom line.

#### QUALITY

Our years of experience are reflected in every filter that we build. This leads to a superior filter to anything else on the market.

#### EXPERTISE

Our technological skills and expertise allow us to build the pelletizing die you need for your operation.

#### TECHNOLOGY

We have mastered the design and construction of water baths, giving our customers an edge in their extrusion business.



EXTRUDERS • SCREEN CHANGERS • PELLETIZERS • AIR STRIPPERS • WATER BATHS



**CONTACT US TO SPEAK TO AN EXTRUSION EXPERT**

Working together to provide solutions today for tomorrow's demands

Worcester, MA, USA  
Phone: (508) 852-0040  
[www.berlynecm.com](http://www.berlynecm.com)

We will be exhibiting at  
BOOTH #C303  
**PLASTICS EXTRUSION  
WORLD EXPO  
NORTH AMERICA**  
November 3-4 2021  
CLEVELAND, OHIO, USA  
**REGISTER  
FOR FREE**

REPS WANTED - PLEASE CONTACT US

## Plastic Extrusion Tools Fast!



### PLASTIC EXTRUSION TOOLING BUILT IN 1 WEEK!

Quotations within 24 hours...

Tooling production in 24 hours for most plate dies and transitions. Less than one week for many die, transition and calibrator tools.

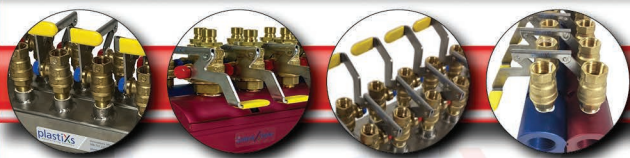
**New Jersey Precision Technologies, Inc.**

Improving lives through manufacturing innovation.

1081 Bristol Road, Mountainside, NJ 07092  
800-409-3000 • email: [sales@njpt.com](mailto:sales@njpt.com) • [www.njpt.com](http://www.njpt.com)



A valve linkage system that allows a single lever to operate both mold cooling supply and return lines simultaneously, allowing for faster mold changes and decreased downtime.



**Designed and Engineered by plastiXs**  
(US Patent 10,160,149 B2)

888-792-2223 | [www.plastixs.com](http://www.plastixs.com) | [sales@plastixs.com](mailto:sales@plastixs.com)



Sign up for a  
**FREE** subscription



**Plastics**  
HOTLINE

Learn about:

- Industry news, trends and insights across all aspects of the plastics market.
- Read our digital issues online.
- Watch industry videos.
- Check out featured products being introduced into the market.
- Keep up with the latest auctions.

[www.plasticshotline.com/subscribe](http://www.plasticshotline.com/subscribe)

# Leistritz

## ZSE-MAXX

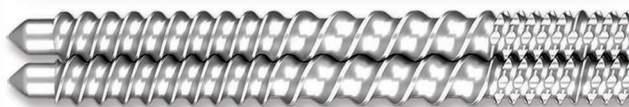
### Twin screw extruders and systems

- Higher torque & more free volume
- Screw diameters from 12 to 260 mm
- Fully equipped NJ process laboratory

**e-news**

## Twin Screw Report

For more information on Leistritz  
Twin Screw Report e-tech newsletter  
scan QR code



Compounding • Devolatilization • REX • Direct extrusion • Foaming

[sales@leistritz-extrusion.com](mailto:sales@leistritz-extrusion.com) / [www.leistritz-extrusion.com](http://www.leistritz-extrusion.com)

## TIE BARS



**Back into Production  
With Minimal Downtime  
Tie Bars & Nuts**



**Birch Machinery • 989-624-9371**  
email: [generalinfo@birchmachinery.com](mailto:generalinfo@birchmachinery.com)  
Website: [www.birchmachinery.com](http://www.birchmachinery.com)

*Any Machine - Anywhere in North America!*

ACL **Staticide**

## Topical Anti-Stats Static Control Insurance

- ↳ Prevent static electricity with easy-to-use topicals. Cost-effective solutions for commercial, industrial, and institutional environments.



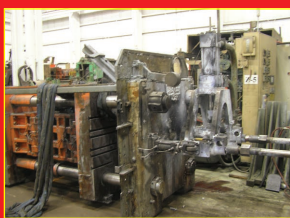
[www.aclstaticide.com](http://www.aclstaticide.com)

[info@aclstaticide.com](mailto:info@aclstaticide.com) 800-782-8420

**Increase your machines longevity by rebuilding the toggle linkage.**



**We can rebuild the whole "top half" or just the linkage.**



**Birch Machinery • 989-624-9371**

email: [generalinfo@birchmachinery.com](mailto:generalinfo@birchmachinery.com)

Website: [www.birchmachinery.com](http://www.birchmachinery.com)

*Any Machine - Anywhere in North America!*

**Blow Molding Machinery, New, Used, Rebuilt.  
Parts, Service, Technology and Training Classes**

Check out website: [www.jackson-machinery.com](http://www.jackson-machinery.com) Or Call 262-284-1066



Alphamac  
All Electrical

Sterling

**HAYSEN**



**United Plastics, Inc.**

1227 Garfield Avenue • Flint, MI 48505

PH: 810-238-2186 • FAX: 810-238-2273

email: [roy@unitedplasticsinc.com](mailto:roy@unitedplasticsinc.com)

[www.unitedplasticsinc.com](http://www.unitedplasticsinc.com)

### BUY/SELL:

Plastic and surplus regrind, repro, virgin materials, dunnage, trays, pallets, crates, parts, sheet, pipe, purge

### SERVICES:

Washing & Drying Capabilities,  
Toll Grinding 200,000 lbs. + per day

**GCP Garden City Plastics**  
Equipment & Supply Co., Inc.

**Garden City Plastics Equip.**

104 Lake Rd. Garden City, MO. 64747

816-862-8703, [www.gcplastics.com](http://www.gcplastics.com)

### For Sale:

- Akei AO-70
- Bekum H-111
- Bekum H-121
- Bekum H-151
- Bekum H-201-D
- Fischer FHB-106-1&2
- Magic MGL-5
- Uniloy 2016, 250R, 350R2, 2, 4 & 6 Heads
- Jomar 175-Ton IBM
- Chillers, Grinders, Marley Towers & Tanks
- High Pressure Air-Compressors

# IMPROVED PROCESS EFFICIENCY

#### DURABILITY

Our extruders provide a greater stability and longer system life that help maintain a healthy bottom line.

#### QUALITY

Our years of experience are reflected in every filter that we build. This leads to a superior filter to anything else on the market.

#### EXPERTISE

Our technological skills and expertise allow us to build the pelletizing die you need for your operation.

#### TECHNOLOGY

We have mastered the design and construction of water baths, giving our customers an edge in their extrusion business.



EXTRUDERS • SCREEN CHANGERS • PELLETIZERS • AIR STRIPPERS • WATER BATHS



**CONTACT US TO SPEAK TO AN EXTRUSION EXPERT**

Working together to provide solutions today for tomorrow's demands

Worcester, MA, USA

Phone: (508) 852-0040

[www.berlynecm.com](http://www.berlynecm.com)

**REPS WANTED - PLEASE CONTACT US**

We will be exhibiting at

BOOTH #C303

PLASTICS EXTRUSION WORLD EXPO

NORTH AMERICA



November 3-4 2021

CLEVELAND, OHIO, USA

REGISTER FOR FREE

## Plastic Extrusion Tools Fast!



40+ EDM machines &  
20+ CNC machines running 24/7

### PLASTIC EXTRUSION TOOLING BUILT IN 1 WEEK!

Quotations within 24 hours...

Tooling production in 24 hours for most plate dies and transitions. Less than one week for many die, transition and calibrator tools.

**New Jersey Precision Technologies, Inc.**

Improving lives through manufacturing innovation.

1081 Bristol Road, Mountainside, NJ 07092

800-409-3000 • email: [sales@njpt.com](mailto:sales@njpt.com) • [www.njpt.com](http://www.njpt.com)



**BLADES**  
Machinery Co., Inc.

847-439-2126

[www.bladesmachinery.com](http://www.bladesmachinery.com)

e-mail: [blades@bladesmachinery.com](mailto:blades@bladesmachinery.com)



**We Buy & Sell  
Used Plastic  
Machinery**

*since 1967*

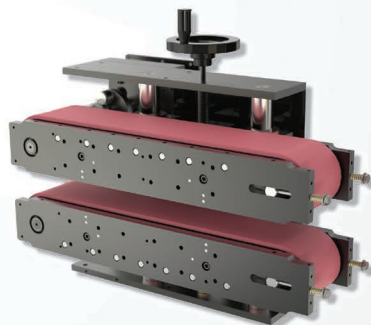
**Se Habla Español**

PRIMARY EQUIPMENT

**Get Your Factory  
in Motion With**



**Versa Pullers**



**Versa Machinery**

Toll Free: (866) 448-3772

Email: [PHPullers@VersaMachinery.com](mailto:PHPullers@VersaMachinery.com)

[www.versapullers.com](http://www.versapullers.com)

**MN Machinery Network**

**We specialize in buying and selling the following types of machinery:**

- Injection Molding Machines
- Extruders and Related Recycling Machinery
- Blow Molders
- Auxiliary Equipment
- CNC and Conventional Metal Working Machines
- Water Jets
- And More

Call us at 818-465-6700 for a confidential evaluation of your machinery. We are interested in buying a single piece of machinery or your entire plant.

**USED MONTHLY SPECIALS**

1100 ton 296 oz Husky	2001
950 ton 126 oz Toshiba	2004
850 ton 181 oz Cincinnati	1995
198 ton 6.8 oz Sumitomo electric	2006
190 TON 19 oz TOSHIBA	2000
176 ton 6.4 oz ARBURG vertical	2014
93 ton 3 oz JSW electric	2003
38 ton 1.3 oz DEMAG	2001

**BLOW MOLDERS** – STERLING AND CINCINNATI 20 LB TO 3 LB

**ROBOT** – STAR & YUSHIN AS NEW AS 2012

**EXTRUDERS** – 3" & 6" DAVIS STANDARD 1997

**GRANULATORS** – 40 HP, 10 HP, 7.5 HP, 3 HP RAPID AS NEW AS 2019

**DRYER** – AEC AND DRI-AIR AS NEW AS 2013

**MN Machinery Network**

plasticsales@machinerynetwork.com  
818-465-6700 www.machinerynetwork.com

**Sales Rep & Distributor**

Plastic bag manufacturer looking for established sales reps to sell complete plastic bag line.

– Commission –

**AR-BEE**

Transparent Products, Inc.  
(847) 593-0400

Outside IL 1-800-621-6101

Ask For Bob Bode Jr.

**CUTTING EDGE KNIVES**

**SPECIALISTS IN ALL MAKES AND MODELS OF KNIVES FOR THE PLASTIC INDUSTRY**

- |                                |                    |                       |
|--------------------------------|--------------------|-----------------------|
| *Granulator Knives             | *Pelletizer Knives | *Specialty Blades     |
| *Under Water Pelletizer Knives | *Pulverizer Discs  | *Granulator Screens   |
| *Refurbish Your Grinders       | *Sharpening        | *Die Face Resurfacing |

Call Today • 1-800-508-9701 • 412-279-9350

lorraine@cuttingedgeknife.com

www.cuttingedgeknife.com

**Air Cooled Portable Chillers**

**Reliable and Durable**

2–100 ton. in capacity



Your source for economical and dependable industrial water chillers.

Learn more: 1.800.473.9178 www.waterchillers.com

**GRINDING**

- GRANULATION/COARSE GRINDING
- PULVERIZING/FINE GRINDING
- CRYOGENIC GRINDING
- SIFTING/CLASSIFYING
- BLENDING/MIXING
- REPACKAGING



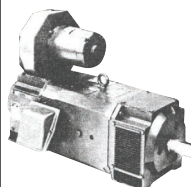
**AllgrindPlastics**  
P.O. Box 363  
Bloomsbury, NJ 08804

908-479-4400

web site: www.allgrind.com  
e-mail: info@allgrind.com

**ROW ELECTRICAL EQUIPMENT INC.**

P.O. Box 2812 • Toledo, Ohio 43606 • 419-248-4479 • 800-248-4479  
Fax No. 419-244-8887 • sales@rowelectrical.com • www.rowelectrical.com



100,000 Sq. Ft. Warehouse  
We sell new and used  
industrial electrical equipment, including:

- D.C. and A.C. Motors
- Switchgear
- D.C. Drives
- Gear Reducers
- A.C. Starters
- 1 HP Thru 3500 HP
- Transformers
- Engine-Gen. Sets

**CALL 24 HOURS • WE BUY USED ELECTRICAL EQUIPMENT**

**Better Plastic Solutions Inc.**

90 ton Thermal Care  
Water Cooled Chiller

Maguire LPD-100 Vacuum  
Dryer with Loading System  
for the Dryer and Machine

10 and 15 hp MPG Staggered  
Rotor Granulators

Novatec Portable  
Dryers 25-100 cfm

Davis Standard SS Vacuum  
Sizing Tank 8"x 8" Cross Section

2 ton AEC Air Cooled Chiller

www.bplasticsolutions.com

Contact: Ben @ 612-940-2774



# BARREL BORE GAUGES

Checks IDs  $\frac{3}{4}$ " – 24"

Checks barrel lengths to 30'



Over 30 years experience  
designing, manufacturing, rebuilding,  
Screws and Barrels.

For Injection, extrusion and mold molding.

**FLITE**  
TECHNOLOGY

[www.flitetech.com](http://www.flitetech.com)

toll free: (800) 327-9310

phone: (321) 631-2050

fax: (321) 636-3508

## PLASTICS HOTLINE

A RDG Media, Inc. Publication  
P.O. Box 80915  
Rochester, MI 48308

CALL 586-227-9344

Presorted Std  
US Postage  
PAID  
RDG Media, Inc.

**BLADES**  
Machinery Co., Inc.

**Tel: 847-439-2126 • Fax: 847-439-0917**

[www.bladesmachinery.com](http://www.bladesmachinery.com)

e-mail: [blades@bladesmachinery.com](mailto:blades@bladesmachinery.com)

**MDNA**  
MACHINERY DEALERS  
NATIONAL ASSOCIATION

## THE GRANULATOR SUPERSTORE®

### GRANULATORS

- (6) Wortex UP-730, 735, 755HS
- (3) Cumberland 30T, 56T
- (3) Rapid CR-66
- Cumberland GP810
- (65) 8x10 Nelmor 5 HP
- (20) 9x12 Rapid 7.5 HP
- (2) Cumberland Model 18, 20
- (40) 10x12 Nelmor 10 HP
- (10) B&J BP27, BP32
- (6) Cumberland 1215
- (110) Nelmor 1215, 1220
- (1) B&J 1248 w/Feed Rolls
- (5) Conair CG1418, 1424
- (1) Rapid 1418K
- (2) 14x20 Cumberland 20 HP
- (14) Cumberland 284, 484, 584, 684
- (4) Cumberland 1426I, 60 HP
- (5) Nelmor 1436 w/Feedrolls, 1454
- (6) 24B Cumberland 75 HP
- (4) Cumberland 1456
- (8) Cumberland 1616, 1620, 1628
- (6) Nelmor 1620, 1624, 1628
- (4) 28B Cumberland 75 HP
- (7) Rapid 1824, 1831, W-1836
- (4) Nelmor 1820, 2020
- (2) Cumberland 1836
- (8) 37B Cumberland 37H
- (3) CMG 1842I
- (1) Granutech 2048, 100HP
- (2) Cumberland 50B, 72B
- (2) Cumberland 2428I
- Cumberland Model 80,81
- Foremost HD-7
- (5) Rapid Model 2442R, M, H
- Ball & Jewel 3030 (100 HP)
- 26x80 Condux 150 HP
- (3) Nelmor 3036, 3048, 3030TF

- (2) Cumberland 3250
- (1) Condux CV-50 Compactor

### SHREDDERS

- (1) Vecoplan RG62
- (2) ShredTech ST 10, 24" x 50"
- ShredPax AZ-80

### THERMOFORMING LINES

- (1) Brown CS-4500, 1995 w/ Trim Press
- Brown Trim Presses: T-301, T-340, T-360
- Lyle 40"x40", 50"x50"

### TEMP. CTRL., UNITS CHILLERS

- (7) Sterlco 12 KW Oil Unit
- (6) Thermocare 2, 3 Ton
- Advantage 12KW Oil, 10 KW Water

### PELLETIZERS

- (12) Cumberland 6", 8", 11", 14", 20"
- (3) Conair T208
- (3) Automatik Sphero 220
- (1) Sheer Bay B20-P long cut

### DRYERS

- (1) Carter Day Spin Dryers
- (25) Conair CD30, CD100, CS101, CD-200, CD-300, CD-600
- (1) Novatec Novadrier N-150R Unitized
- Una-Dyne DHD-8, DHD-25 w/Hoppers
- (1) Novatec MPC 1000 Dryer

### EXTRUDERS AND LINES

- (5) 1" Wayne Extruder, Killion
- (3) Davis Standard 1 1/2" Extruders
- (3) Davis Standard 2.5" 32:1, 24:1
- Davis Standard 3" 24:1, 30:1
- Davis Standard 3 1/2" 30:1 Extruder
- 3 1/2" Egan Extruder 30:1
- 6" CDL Extruder, Vented, 30:1
- 6 1/2" Davis Standard 27:1, 1999
- (60) Sheet Dies 4"-89" Width
- (6) EDI 20" PVC Siding Dies
- Davis Standard 52" 18x30x30 Roll Stack

- 24"x50" PTI Roll Stack

- 6" 30:1 Prodex

- 78" PTI Sheet Line

- Davis Standard 4 1/2" 24:1

### JUST ARRIVED:

- (2) Davis Standard 3 1/2" Extruder
- PTI 4" Extruder
- (2) Conair MT 104-22-5 Vacuum Tanks
- (2) Xalloy Screw Changers
- (3) 250 Cubic Feet, SS Ribbon Blenders
- Cumberland 1628 FX, 40 HP
- W&P 20mm, 40mm & 83mm
- Twinscrew Extruders
- Rapid 10x18 w/ Conveyor
- Parkinson Series 50, 60" Winder
- (2) Crown Spin Dryers
- Rapid 1831K 50HP
- Sweco SS Screener, 18" 30"
- 1 1/2" Davis Standard
- H.C. Davis, HD-5 Blender, SS
- Davis Standard 1 1/2" Rubber Extruder
- Cumberland 284 w/Feedrolls
- ShredTec 30"x52" Shredder
- Gala/Leistritz Extruder 27mm
- Berstorff 25mm Extruder
- (3) Witte Screeners
- 200 HP Champion Hammermill
- CME C5 Cooler
- Herbold SMS 45/160 H5-2
- Cumberland 56U, 30 HP
- (1) Procedyne TCF-2430 FD
- Rosenthal Sheetters 36", 60", 72"
- Pallman PP8 Pulverizer

### PIPE & PROFILE EQUIPMENT

- S.I.C.A. 10" Planetary Saw
- Battenfeld Upcut Saw
- Battenfeld 6"x56" Puller
- (5) Vacuum Tanks

**"IN STOCK" • OVER 15,000 KNIVES, SCREENS & PARTS**