

May 2021

Plastics

HOTLINE

rdgmedia
PUBLICATION

In This Issue: Machinery Network 15 | Bausano 3 | Versa Machinery 14 | Lorenz Conveying Products 12



“Eco-Pro will keep your cooling lines clean and your molds running better!”

Steve Johnson, President, MoldTrax Maintenance Solutions



Eco-PR 360

The Eco Pro 360 is quickly becoming a “shop favorite” tool due to its ease of use and cleaning performance. Many of our course molds arrive with water lines that are plugged with rust, mineral deposits and just general crude. The Eco Pro makes quick work of these no matter the level of contamination. We highly recommend the Eco Pro as a “must have” shop tool that will keep your cooling lines clean and your molds running better!

Steve Johnson, President,
MoldTrax Maintenance Solutions



Mold Core BEFORE



Mold Core AFTER

Non-Hazardous Flushing System for Cleaning Cooling Passages

- **Safe** rust remover and preventative
- **Reusable** iD Eco-Pro 360 Solution
- **No Electrical Needed** –
Runs Off Compressed Air!

Contact us today or visit iDadditives.com and check out our **YouTube channel** for more information and how-to video demonstrations!



See Our Product Spotlight in this issue of Plastics Hotline to learn more!

iD Additives™

Connect
With Us!Check Out Our
YouTube Videos!

Unmatched Technical Support for Innovative Products!

iD Additives, Inc • 512 W Burlington Ave., La Grange, IL 60525 • (708) 588-0081 • iDadditives.com



#MAGUIREMASTERS

MAGUIRE MASTERS OF BLENDING™

★ 30+ YEARS ★



- ★ Close to **60,000 blenders** sold worldwide
- ★ **More standard models** than any other producer
- ★ **30+ years** of experience in Gravimetric Blending
- ★ Industry leading **5 year warranty**

MAGUIRE®
Intelligent Simplicity

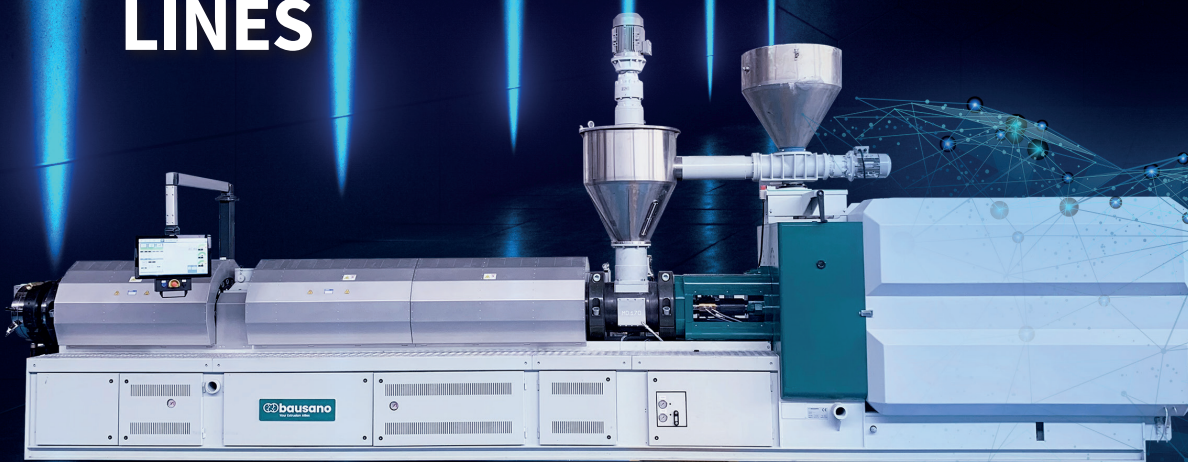
Are you the next Maguire Master? Call us now to find out more.

🐦 @MaguireProducts in Maguire-Products 📺 MaguireProducts

info@maguire.com | www.maguire.com

USA Toll Free +1 888 459 2412 | Canada +1 905 879 1 100 | Europe +44 1827 338 280 | Asia +65 6848 7117 | IMEA +971 4 817 0419 | Taiwan +886 4 2658 1535

HIGH TECHNOLOGY & PRODUCTIVITY EXTRUSION LINES



Twin Screw MD 170 **Nextmover** SERIE

www.bausano.com

Bausano extrusion lines stand out not only for their quality, great solidity and extreme reliability, but also for the possibility to customize every part.

Choosing Bausano means to pick out a strategic partner that can help you to process plastics. We design and manufacture **customized extrusion lines** completely MADE IN ITALY for the production of **pipes, granules, profiles, medical tubes, pockets** and sheets in **thermoplastic materials**. We do everything in-house: from component drawing to line assembly, every step is managed internally by our highly skilled staff, undergoing continuing training.



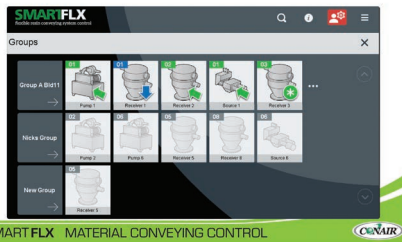
Greater **durability, exceptional performance and great energy savings** thanks to the revolutionary **transmission system** with two intermeshing and **counter-rotating screws**, patented by Bausano. Up to 35% less power consumption thanks to the innovative I.E.4 motors, **Smart Energy System** and real-time energy analysis of the entire system with the **Digital Extruder Control system**.

The key to success of our products is customization: from electric or electronic to mechanical components, from touch-screen monitors to appearance of elements and lines, everything is shaped around the special needs of the customer. **Each extruder is unique**, even different from the others belonging to the same series. What never changes is the ability to optimize production, cutting down costs and passing any tests with **exceptional results**.

Model	Installed Powers	Motor Consumption
MD 170/28	Ceramic resistors 192 kW	I.E.2 low-efficiency motors
MD 170/28 Nextmover	Smart Energy System 124 kW	I.E.4 high-efficiency motors
DIFFERENCE >>	- 68 kW	Energy Saving - Motors - 5%*

*Motors running at 50 HZ, 380V

SmartFLX Conveying Control



Conair's new SmartFLX is a faster conveying control with simple installation, configuration and use. Control the latest conveying technology available, such as Wave Conveying and RFID Proofing, using recipes, groups, and contextual help.

With Conair's common control approach, the user experience is familiar. Operators using any Conair piece of equipment can feel comfortable making adjustments. SmartFLX also connects easily to the SmartServices® Industry 4.0 platform, giving plant-wide visibility, control and data analysis.

Learn more at www.conairgroup.com.

H5 Series Robot from HYROBOTICS

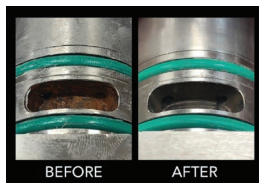
- Combines the features of an Articulated Robot and a Cartesian Robot in one Robot Systems
- Four Articulated AC Servo and One Cartesian AC Servo Axes
- The Five AC Servo Axes provide More Strength, More Flexibility and a Smaller
- Footprint including low ceiling environment
- Easy to use 7.5" touch screen controller with flexible programming
- For 200 ~ 4000 Tons Horizontal Injection Molding Machine



www.youtube.com/watch?v=4uSogNQ09PQ

Preventative Maintenance Cleaning System

Eco-Pro Products from iD Additives help molders and extruders save time and money. Eco-Pro 360 is a non-hazardous, water-based chemical that removes rust and mineral scale buildup. It is used with the Eco-Pro Cart to flush out, clean and restore cooling passages. Eco-Pro 360 is reusable due to the built-in Eco-Pro cart filter. For users with closed-loop systems such as extruders and thermoformers, Cool-EX water replacement fluid is an all-organic, high performance coolant that inhibits corrosion, mineral scale, and fouling.



Learn more at www.idadditives.com/id-eco-pro-360-cart.

Maguire Masters of Blending



Maguire has 30+ years of expertise in Gravimetric blending, with close to 60,000 blenders sold worldwide. We have more standard models than any other producer and a leading 5 year warranty. Are you the next Maguire Master? Call us now to find out more.

Learn more at bit.ly/2MusbZT.

X-PURE Water Supply System

X-PURE provides a reservoir of clean distilled water for use in high temperature water circulation systems. XPURE is a cost-effective solution for protecting mold cooling circuits from scale and other contaminants. When XPURE is used as recommended, it's 100% effective at keeping

molds and temperature controllers, that run water at 300°F – 450°F, operating effectively. Designed, engineered and manufactured by Plastixs®.



www.plastixs.com/categories/x-pure-water-supply-system

Plastrac's Auto-Disc Gravimetric Flood-Fed Series Blender

If you need a blending system for one flood fed natural resin and three metered ingredients, Plastrac's modular GF-404 is ideal. It has a capacity of 2,200 lbs (1,000 kg) per hour. The feeder handles all pellet types, including micro pellets and regrind. It integrates a weigh scale system with push-button calibration for the additive feeder. Rugged clear additive hoppers are easily swapped for color color changes.



For more information, visit plastrac.com.

Rapistak – We're More Than Just Storage...

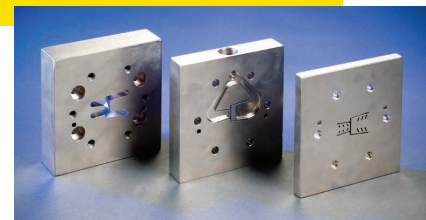


The ProStak™ Management System fits well in any manufacturing, maintenance or warehouse environment. It combines the ability to store varying sizes and shapes in a densely-packed instantly adjustable pallet rack. The racking system uses steel fabricated pallets designed to carry a uniform distributed load of 2,000, 4,000, or 6,000 pounds.

Give us a call for a free space evaluation at 716-822-2804. Learn more at www.rapistak.com.

Transform your Extrusion Business with custom tooling from NJPT.COM

We specialize in 5 day (or sooner) delivery of custom plastic extrusion tooling for many industries and applications, including: POP, price channels, displays, slat walls, packaging products, commercial products, industrial and home building products, tubing and hollow profiles, sheet, film and more.



Learn more at www.njpt.com or watch our video *Automated Design & Manufacture of Plastic Extrusion Dies* at <https://www.njpt.com/videos.html>.

Lorenz Conveying Products Corp. "Angel Hair" Solutions!

The Lorenz Inline Angel Hair Trap is designed to mount directly in the material stream to collect "angel hair" while allowing continuous flow of pellets to pass through. Connects to line via compression couplings. 2 Week Delivery is standard!

Lorenz Conveying Products now offers same day shipping! Ask about Lorenz Lightning Ship.

We are the conveying products people....

Learn more at <https://lorenzproducts.com>.



Gnuess RSF90 Screen Changer

SN: 0113-3506, rated for up to 2450 lbs/hr, fully automatic 230V operation. Mounted on a stand, includes MAAG Systems hydraulic pump, model ES 70/70 melt pump with 15HP drive and 8-zone temperature controller. Manufactured in 2013.



Learn more at www.bladesmachinery.com/en/?s=17004

Used Machinery Wanted and For Sale

Machinery Network has been providing high quality used plastic, metalworking, and fabrication machinery to our exceptionally loyal client-partners in the U.S., Canada and Mexico since 1987.



We buy and sell:

- Plastic injection & blow molding machines and auxiliary equipment
- Extruders, Thermoformers and related recycling equipment
- NC & manual tool room (mills, lathes, EDMs, etc.)
- Water jet machines
- CMMs and lab equipment

Additionally, our auction division machinery network auctions provides professional, dedicated, liquidation and asset monetization resources. Learn more at www.machinerynetwork.com.

Help for High Temperature Cooling

Your hot water or oil cooling processes for engineered polymers are more transparent and manageable with SMARTFLOW® SS Manifold/Flow Regulator assemblies. Operating temperature is rated 400°F with max pressure of 250psi. Rugged stainless steel construction features 1/2-inch threaded connections and 6 GPM or 22 LPM maximum flow rate. Visit the SMARTFLOW-USA website for details or to design your manifold/regulator combination and take control over high temperature cooling conditions.



Learn more at www.smartflow-usa.com.

Rechner Analog Silo Sensor

The Rechner Stainless-Steel Cable Sensor will give you an exact 4-20mA level reading up to 20 meters of height. The system does not have a dead zone due to the patented Rechner three-electrode measuring principle. For stability the stainless-steel cable base is anchored to the silo floor and the sensor head is mounted securely at the top of the silo. Pressure rating up to 10 Bar with a full silo. Temperature rated for -25C to +70C or -13F/+158F.



Learn more at www.rechner.com.

New Control Instrument From TempTek

The CG Series control instrument from TempTek is standard on the portable water chillers, 2-40 tons, and select central water chillers. The control instrument offers Modbus RTU or SPI communications with TCP optional, graphical LCD display, digital refrigerant and water pressure display and plain language error message reporting. Designed for units using hot gas bypass or digital scroll compressors for capacity control.



Learn more at www.temptek.com.

Inventory Management at your Fingertips... Anytime, Anyplace!

Monitor Technologies' SiloTrack(TM) Cloud remote inventory management system is a web-based application that allows users to monitor current vessel material levels, receive notifications, access/create reports for various departments and more at any location, anytime using any device with an Internet connection. Manage one silo or multiple locations with various storage vessels. Securely view distance, level, volume, weight, percentage and ullages (empty space). It provides an intuitive & powerful interface for Monitor's continuous level sensors to optimize inventory management.



Visit www.monitortech.com/silo-track-cloud.shtml for more information, e-mail monitor@monitortech.com or contact us at 1-630-365-9403.

TEDERIC INJECTION MOLDING MACHINES

Tederic offers a full range of injection molding machine sizes and technologies. Servo toggle from 60 to 4000t, servo two-platen from 480 to 7000t, electric-hydraulic hybrid from 168 to 1088t, all-electric from 40 to 460t and specialist multi-material machines with integrated rotary platens in the range 140 to 4000t. All models are economically priced, with short lead times. **We have the value solution for your application.**



Learn more at www.tedericglobal.com.

Robotic Automation Systems Breaks Ground for New Manufacturing Facility

On April 5, 2021 Robotic Automation Systems broke ground for their new manufacturing facility in Waunakee, Wisconsin, expected to be completed in October. "The facility combines all of our design, engineering, and manufacturing operations under the same roof, increases our manufacturing space to better serve our customers, allows for design and manufacturer of even larger and more complex turnkey plastic molding automation systems, and expands our services into other manufacturing segments where robotics and automation systems can help increase productivity and address workforce shortages," said Craig Tormoen, President of Robotic Automation Systems.

Robotic Automation Systems is a recognized leader and innovator in full-service integration of robotic automation for the plastics industry throughout the United States and North America. From entry level to complex

automation solutions, Robotic Automation Systems helps plastic injection molders increase productivity, reduce scrap, improve part quality, protect molds, equipment and personnel, and address workforce shortages. Learn more at www.roboticautomationsystems.com.



INNOVATIVE ROBOTICS LINE FOR PLASTICS INJECTION MOLDING !

H5 Series !

Heavy Payload , Low ceiling !



H5 SERIES

- Molding Machine Size : 750 ~ 4,000 Tons
- Full Servo Robot up with 5 Axis AC Digital Servo.
- Industry First !. raverse (1 Axis) + Articulated Robot (4 Axis)
- Heavy Payload, Low ceiling & Less foot print
- Application : Basic Take out, Stacking, Insert Over Molding, Gate cutting, 2ndary automation!
- Features : High Strength Steel Frame, Powerful AC servo Motor, High Precision NSK Liner Motion Guide.

H5-C10 Controller

- 7" Wide Touch Screen
- ARM Cortex-A8 CPU, DDR2 512 MB
- Body Attached I.O box
- High-Performance EtherCAT Communication
- User-Friendly Icon-Based Control Screen.
- Developed with 30 years experience in the plastics molding industry.
- CE Certified Components, ISO 9001 Quality Production.

EPIK SERIES (Single or Double Arm Model)

- Molding Machine Size : 200 ~ 800 Tons
- Single or Double Arm Model (3~7 Axis AC Servo Control)
- Control : HYK-70 (Keba) Controller
- Application : Basic Take out, Stacking, Insert Over Molding, In Mold Labeling and Other 2ndary Automation, Sprue Picking
- Features : High Strength Steel Frame, High Strength AC servo Motor, Low Noise NSK Liner Motion Guide

HYK-70 (KEBA) Controller

- 7" Wide Touch Screen
- 1.2 GHz, ARM Cortex-A9 Core
- Ergonomic Design,
- High-Performance EtherCAT Communication
- High Quality Components, ISO 9001 Quality Production.
- User-Friendly Icon-Based Control Screen.
- Mode and teaching type programming for beginner mode
- Line by line programming for expert mode

ISO9001 QUALITY

CE CERTIFIED



EPIK-W SERIES (Flat Front Style Robot)

- Molding Machine Size : 400 ~ 4,000 Tons
- Flat Front style Robot with Single Arm Model
- Control : HYK-70 (KEBA) Controller
- Application : Basic Take out, Stacking, Insert Over Molding, In Mold Labeling and Other 2ndary Automation.
- Features : Longer parts handling, Low ceiling.



UNIK- SERIES (Mini Servo Robot)

- Molding Machine Size : 50 ~ 200 Tons
- Single or Double Arm Model
- Control : HYK-70 (KEBA) Controller
- Application : Take out, Stacking, Gate cutting, 2ndary Automation, Light Application.



HYROBOTICS CORP.

5319 BROWN AVE. ST. LOUIS MO 63120, USA

WWW.HYROBOTICS.COM



Temperature Control Units

Water Units : up to 300°F at 35-100 GPM

Oil Units : up to 500°F at 20-100 GPM

Over 30 Years Experience
in Temperature Control
Unit Production!



Low capital investment, simple start up & operation, easy to maintain, microprocessor control instruments that are easy to read and understand, factory sales and service support along with new product warranties are the reasons why TempTek water and oil products are superior. Call now for Pricing & Delivery!

317-887-6352

www.TempTek.com

525 East Stop 18 Road
Greenwood Indiana 46143

TEMPTEK

The perfect blend. Every time.

On the fly
Color Changes. PDQ.



There are a lot of features that distinguish a Plastrac blender, but none greater than the ability to change colors as often and as quickly as customer orders demand it. The secret is our patented level-sensing vane switch (standard on every single blender). Harried processors can hurry up color changes by swapping top castings without any need for cable removal.

plastrac



610-356-3000 • Plastrac.com

ASK FOR CLEAN PLAST® PURGE COMPOUNDS AND NEWLY RELEASED MOLD CARE PRODUCTS!



“DON’T just purge to purge, PURGE TO CLEAN using the original **CLEAN PLAST®** purging compound. Contact me today to arrange for a FREE purge trial at your plant and see the difference a **CLEAN PLAST®** PURGE will make.” –*Rochelle Lemieux, President*

- **CLEAN PLAST®** is safe to Purge through Hot Runners including pre-form molds!
- **CLEAN PLAST®** is safe for all resins including PET Bottle grade.
- **CLEAN PLAST®** has no harmful abrasives or solvents!
- **CLEAN PLAST®** ingredients are GRAS by the FDA.
- **CLEAN PLAST®** cleans Screws, Barrels, Accumulators, Hot Runners and Stack Molds.
- **CLEAN PLAST®** can be used in Injection Molding, Extrusion, and Blow Molding.





MOLD CARE



Along with purging products, Clean Plast® also offers a line of mold care sprays that can be used for mold and tool applications. Our mold care products consist of: CPMC100 Mold Cleaner and Degreaser, our environmentally friendly CPMC101 Go Green® Mold Cleaner, CPMC200 Mold Rust Preventive, CPMC300 Heavy-Duty Mold Release, CPMC301 Food Safe Mold Release, and CPMC400 Silicone Mold Release. Contact us for more information and a free sample!

Visit us at: www.CLEANPLAST.com

A 100% Woman Owned Business



RAPISTAK CORPORATION

Go from this...



Our mold management systems are designed to save you space, time and money.

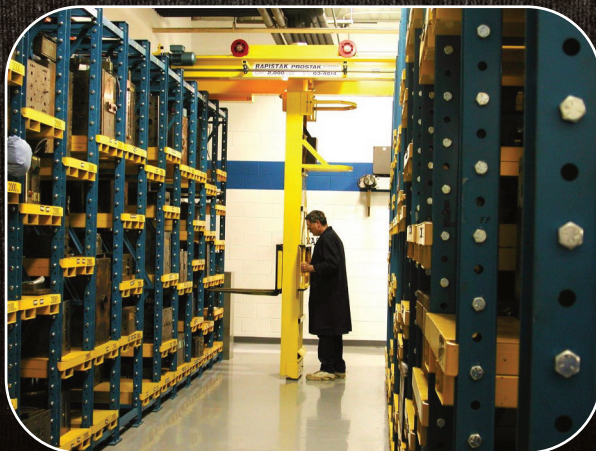
Visit our website or give us a call to learn more about how we can help you with your die or mold management needs.

716-822-2804 | www.rapistak.com

MORE THAN JUST STORAGE!

- * Manage your inventory
- * Become better organized
- * Protect your investment
- * Maximize cube utilization
- * Create a safer working environment

To this!



Highest Conveying Capacity

- Continuous push / pull conveying
- Plastic pellets, powders & fly ash
- Exclusive dual blower design
- Low temperature rise
- Blow to silos / fill trucks & railcars
- Up to 135,000 lbs / hr thru 6" line



Christianson

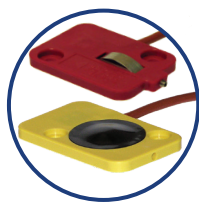
Pneumatic Conveying Equipment

800-328-8896
www.christianson.com



Crash your Mold?

Select the Right Smartflow® In-Mold Sensor to Help Prevent Mold Damage



THINSWITCH® and LIQUID-RESISTANT THINSWITCH

Ejector Plate Return Switches for molds with 3/16" rest buttons

- Std. Temperature: 175°F (79.4°C)
- High Temperature: 250°F (121°C)
- Tested to 10 million cycles
- SPDT switch



GLOBAL THINSWITCH

Liquid-Resistant Ejector Plate Return for molds with 3mm, 4mm and 3/16" rest buttons

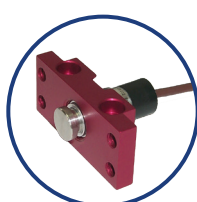
- Std. Temperature: 175°F (79.4°C)
- Includes special bracket for fast switch change without screws
- SPST switch, gold internal contacts



SMARTLOCK®

Slide Retainer & Limit Switch holds slides retracted and confirms slide position.

- Std. Temperature: 175°F (79.4°C)
- High Temperature: 250°F (121°C)
- 17 to 27 pounds breakaway force
- SPDT switch



VERSASWITCH™

Core Pull Switch verifies core position. (Optional mounting bracket shown.)

- Std. Temperature: 180°F (82°C)
- 3.5 pounds operating force
- 5/8-24 fine thread
- SPDT switch

Ask your SMARTFLOW distributor for details!

burger & brown

4500 E 142nd Street
Grandview MO 64030 USA
816-878-6675



engineering, inc.

www.smartflow-usa.com

Water Chillers

Over 30 Years
Experience in
Chiller Production!

Portable Chillers : .25-40 tons at .7-92 GPM

Indoor Portable Chiller ... Air or Water Cooled ... some units in stock to 20 tons.

Central Chillers : 5-180 tons at 48-540 GPM

Indoor & Outdoor units ... Air or Water Cooled

Complete chiller & pump system packages or stand alone chilling modules.



Portable Chillers



Central Chillers

Low capital investment, simple start up & operation, easy to maintain, microprocessor control instruments that are easy to read and understand, factory sales and service support along with new product warranties are the reasons why TempTek water products are superior. Call now for Pricing & Delivery!

317-887-6352

www.TempTek.com

525 East Stop 18 Road
Greenwood Indiana 46143

TEMPTEK

BOLTED COUPLING



- ✓ A PERMANENT SOLUTION TO JOIN TUBE/PIPE TOGETHER
- ✓ GALVANIZED OR STAINLESS CONSTRUCTION
- ✓ MANY SIZES ARE INVENTORIED

SERIES N ROLLER GATE



- ✓ USE IN HIGH CYCLE GRAVITY APPLICATIONS
- ✓ DUST TIGHT SEAL ON THE BLADE
- ✓ 2 WEEK STANDARD DELIVERY

SERIES A MAINTENANCE GATE



- ✓ STOP DUMPING YOUR HOPPER FOR DOWNSTREAM MAINTENANCE
- ✓ HAND CRANK ACTUATED FOR VACUUM, PRESSURE OR GRAVITY APPLICATIONS
- ✓ 2 WEEK STANDARD DELIVERY

Lorenz
Conveying Products

USA 1-800-263-7782 | CANADA 1-800-263-1942
lorenzproducts.com

IMPROVED PROCESS EFFICIENCY

DURABILITY

Our extruders provide a greater stability and longer system life that help maintain a healthy bottom line.

QUALITY

Our years of experience are reflected in every filter that we build. This leads to a superior filter to anything else on the market.

EXPERTISE

Our technological skills and expertise allow us to build the pelletizing die you need for your operation.

TECHNOLOGY

We have mastered the design and construction of water baths, giving our customers an edge in their extrusion business.



EXTRUDERS • SCREEN CHANGERS • PELLETIZERS • AIR STRIPPERS • WATER BATHS



CONTACT US TO SPEAK TO AN EXTRUSION EXPERT

Working together to provide solutions today for tomorrow's demands

Worcester, MA, USA | Phone: (508) 852-0040 | www.berlynecm.com

REPS WANTED - PLEASE CONTACT US

RECHNER SENSORS CAPACITIVE LEVEL CONTROL



www.rechner.com - 1-800-544-4106 - Sanborn, NY



Eliminate Contaminants & The Damage They Cause

- Provides a reservoir of clean distilled water for use in high temperature water circulation systems
- Compact and cost-effective solution for protecting mold cooling circuits from scale and other contaminants
- Used as recommended, X-PURE is 100% effective at keeping molds and temperature controllers, that run water at 300°F - 450°F, operating effectively
- Designed, engineered and manufactured by Plastixs®

plastixs
manufacturing solutions

sales@plastixs.com



United Plastics, Inc.

1227 Garfield Avenue • Flint, MI 48505
PH: 810-238-2186 • FAX: 810-238-2273
email: roy@unitedplasticsinc.com
www.unitedplasticsinc.com

BUY/SELL:

Plastic and surplus regrind, repro, virgin materials, dunnage, trays, pallets, crates, parts, sheet, pipe, purge

SERVICES:

Washing & Drying Capabilities,
Toll Grinding 200,000 lbs. + per day

Plastics Sign up for a HOTLINE FREE subscription

Learn about:

- Industry news, trends and insights across all aspects of the plastics market
- Read our digital issues online.
- Watch industry videos.
- Check out featured products being introduced into the market.
- Keep up with the latest auctions.

www.plasticshotline.com/subscribe



NEW, USED, REBUILT
Blowmolding Machines

Serving the Industry
Over 40 Years!

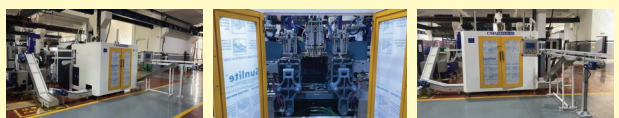
CURRENT REBUILD IN PROGRESS

Bekum HBD-202 100mm Hi Output Grooved Extruder 2x220/240 Dual Head. This machine has not yet been committed to a customer. Inquire to purchase.



Need an alternative to other high cost blow mold machines? We have been importing Chinese machines since 1987. **LET ME QUOTE ONE**

We can handle the complete process from machine design to turn key start up in your plant. We arrange all importing, and shipping and do our own rigging at our facility. We will unload the container, place in our shop, hook to power and do any final fine tuning to make it a ready to place into full production on your floor when it leaves here. We can also train your personnel in our shop or yours.



Shop Phone: 707/765-6475 - Text: 707-975-3725

E-mail: purfectplastics@aol.com • www.purfectplastics.com

Contact: Dennis Purwin - Cell 707-975-3725 • 1320 Scott Suite C, Petaluma, CA

FOLLOW "MOLDMAN2010" on EBAY for LIQUIDATION "BUY IT NOW" and "AUCTION" listings

Plastic Extrusion Tools Fast!



40+ EDM machines &
20+ CNC machines running 24/7

PLASTIC EXTRUSION TOOLING BUILT IN 1 WEEK!

Quotations within 24 hours...

Tooling production in 24 hours for most plate dies and transitions. Less than one week for many die, transition and calibrator tools.



New Jersey Precision Technologies, Inc.

Improving lives through manufacturing innovation.

1081 Bristol Road, Mountainside, NJ 07092

800-409-3000 • email: sales@njpt.com • www.njpt.com

BLADES

Machinery Co., Inc.

Tel: 847-439-2126 • Fax: 847-439-0917



www.bladesmachinery.com

e-mail: blades@bladesmachinery.com

THE GRANULATOR SUPERSTORE®

GRANULATORS

- (10) Wortex UP-730, 735, 755HS
- (3) Cumberland 30T, 56T
- Cumberland GP810
- (65) 8x10 Nelmor 5 HP
- (20) 9x12 Rapid 7.5 HP
- (2) Cumberland Model 18, 20
- (40) 10x12 Nelmor 10 HP
- (10) B&J BP27, BP32
- (6) Cumberland 1215
- (110) Nelmor 1215, 1220
- (1) B&J 1248 w/Feed Rolls
- (5) Conair CG1418, 1424
- (1) Rapid 1418K
- (2) 14x20 Cumberland 20 HP
- (14) Cumberland 284, 484, 584, 684
- (6) Cumberland 14261, 60 HP
- (5) Nelmor 1436 w/Feedrolls, 1454
- (6) 24B Cumberland 75 HP
- (4) Cumberland 1456
- (8) Cumberland 1616, 1620, 1628
- (6) Nelmor 1620, 1624, 1628
- (6) 28B Cumberland 75 HP
- (7) Rapid 1824, 1831, W-1824, W-1836
- (4) Nelmor 1820, 2020
- (3) Cumberland 1836
- (10) 37B Cumberland 37H
- (3) CMG 18421
- (1) Granutech 2048, 100HP
- (3) Cumberland 50B, 72B
- (2) TRIA 120-49 w/Feedroll
- (2) Cumberland 24281
- Cumberland Model 80,81
- Foremost HD-7
- (3) Rapid Model 2442R, M, H
- (1) Cumberland X-700
- Ball & Jewel 3030 (100 HP)
- 26x80 Condux 150 HP
- (3) Nelmor 3036, 3048, 3030TF
- (2) Cumberland 3250, 3284
- (1) Condux CV-50 Compactor

SHREDDERS

- Lindner MS-2000
- Satrind Shredder 100" K25/100
- (1) Vecoplan VH34/75CW
- (1) Vecoplan RG62
- (2) ShredTech ST 10, ST 25
- (1) B&J SB10/615 Shred Buster
- (1) Vecoplan VH22/100CW
- ShredPax AZ-80

THERMOFORMING LINES

- (1) Brown CS-4500, 1995 w/Trim Press
- Brown Trim Presses: T-301, T-340, T-360
- Lyle 40"x40", 50"x50"

TEMP. CTRL., UNITS, CHILLERS

- (7) Sterlco 12 KW Oil Unit
- (6) Thermocare 2, 3 Ton
- Advantage 12KW Oil, 10 KW Water

PELLETIZERS

- (8) Cumberland 6", 8", 20"
- (4) Conair 2065, T208
- (3) Automatik Sphero 220
- (2) Gala SLC-6 System
- (2) Beringer WRP-12
- (2) Sheer Bay SGS 100E, 300L

- (1) Sheer Bay B20-P long cut

DRYERS

- (2) Carter Day Spin Dryers
- (25) Conair CD30, CD100, CS101, CD-200, CD-300, CD-600
- (1) Novatec Novadrier N-150R Unitized
- Una-Dyne DHD-8, DHD-25 w/Hoppers
- (1) Novatec MPC 1000 Dryer

EXTRUDERS AND LINES

- (5) 1" Wayne Extruder, Killion
- (3) Davis Standard 1 1/2" Extruders
- Davis Standard 1 1/2" Extruder
- 2 1/2" Welex 30:1 L/D, 60 HP
- (5) Davis Standard 2.5" 32:1, 24:1
- Davis Standard 3" 24:1, 30:1
- 3 1/2" Egan Extruder 30:1
- 6" CDL Extruder, Vented, 30:1
- 6 1/2" Davis Standard 27:1, 1999
- (60) Sheet Dies 4"-89" Width
- (6) EDI 20" PVC Siding Dies
- Davis Standard 52" 18x30x30 Roll Stack
- 24"x50" PTI Roll Stack
- AET 6" 24:1 Extruder
- 6" 30:1 Prodex Pelletizing Line
- 78" PTI Sheet Line
- Davis Standard 4 1/2" 20:1 Rubber Extruder

JUST ARRIVED:

- Cumberland 284 w/Feedrolls
- Cumberland 484 w/Feedrolls
- Davis Standard 3 1/2" 30:1 Extruder
- (8) Cumberland Pelletizers (coming soon)
- ShredTec 30"x52" Shredder
- Rapid 400-45 2017, new in crate
- Leistrich 50mm Extruder
- Rapid Model 200-36 w/Feedrolls
- Gala/Leistritz Extruder 27mm
- Berstorff 25mm Extruder
- (7) 8" Screen Changers
- Granutech TFG3636 Granulator
- (2) Witte Screeners
- 200 HP Champion Hammermill
- Sprout SW26 Pelletmill
- CME C5 Cooler
- Herbold SMS 60/100 H5-3
- Herbold SMS 45/160 H5-2
- ShredTech ST-10 with Trommel
- (2) New Cumberland 37B
- Cumberland 56U, 30 HP
- (1) ProceDyne TCF-2430 FD
- Rosenthal Sheetters 36", 60", 72"
- Herbold SMS 60/100 w/Conveyor
- Herbold SMS 45/120
- Pallman PP8 Pulverizer

PIPE & PROFILE EQUIPMENT

- CDS 4 Belt Puller
- S.I.C.A. 10" Planetary Saw
- Battenfeld Upcut Saw
- (1) CDS SS 23" Vacuum Spray Tank
- Battenfeld 6"x56" Puller
- (5) Vacuum Tanks

Better Plastic Solutions Inc.

Maguire LPD-100 Vacuum Dryer with Loading System for the Dryer and Machine

Novatec 3.5 hp Central Vacuum System with Controller

Motan 450 cfm Multi Hopper Dryer System. Hoppers sizes 30-200 lbs.

Novatec Portable Dryers 25-100 cfm

Thermal Care 90 ton water cooled chiller with pump tank

3-5 ton Thermal Care Portable Air Cooled Chillers

Koolant Coolers 7.5 ton Air Cooled Chillers 3 Available

www.bplasticsolutions.com

Contact: Ben @ 612-940-2774

The Most Accurate Cutter/Puller System Available For Extruded Products



The Model
S1ACT-218
Servo Cutter/
Servo Puller
System Holds
+/- 0.005" Cut
Length Accuracy
Cutting Most
Plastic and
Rubber Extruded
Materials

VERSA MACHINERY

4850 Green Ct, Elkhart, IN 46516

Telephone 574-266-0780

Fax 574-266-0762

www.versamachinery.com



"IN STOCK" • OVER 15,000 KNIVES, SCREENS & PARTS

**Blow Molding Machinery, New, Used, Rebuilt.
Parts, Service, Technology and Training Classes**

Check out website: www.jackson-machinery.com Or Call 262-284-1066



Alphamac
All Electrical

Sterling

HAYSEN

CUTTING EDGE KNIVES

*SPECIALISTS IN ALL MAKES AND MODELS
OF KNIVES FOR THE PLASTIC INDUSTRY*

*Granulator Knives

*Pelletizer Knives

*Specialty Blades

*Under Water Pelletizer Knives

*Pulverizer Discs

*Granulator Screens

*Refurbish Your Grinders

*Sharpening

*Die Face Resurfacing

Call Today • 1-800-508-9701 • 412-279-9350

lorraine@cuttingedgeknife.com

www.cuttingedgeknife.com

**Plastics
HOTLINE**

plasticshotline.com/buyers-guide

**Visit our Buyers' Guide to find industry
suppliers for all of your plastics needs.**

**Get Listed In Our Buyers' Guide
both in Print and Online!**

Suppliers: Reserve your company's listing today to be listed all year online and in the August 2021 print edition. The sooner you reply, the longer your listing will be seen in the *Plastics Hotline* 2021 Buyers' Guide. There is a range of listing options for the entire year online and in the August printed issue...this puts your company in front of more than 90,000 buyers.

All listings include a live link to your website.

Contact Lydia at lydia@plasticshotline.com to get a listing form.

Garden City Plastics
Equipment & Supply Co., Inc.

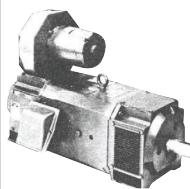
Garden City Plastics Equip.
104 Lake Rd. Garden City, MO. 64747
816-862-8703, www.gcplastics.com

For Sale:

- Akei AO-70
- Bekum H-111
- Bekum H-121
- Bekum H-151
- Bekum H-201-D
- Fischer FHB-106-1&2
- Magic MGL-5
- Uniloy 2016, 250R, 350R2, 2, 4 & 6 Heads
- Jomar 175-Ton IBM
- Chillers, Grinders, Marley Towers & Tanks
- High Pressure Air-Compressors

ROW ELECTRICAL EQUIPMENT INC.

P.O. Box 2812 • Toledo, Ohio 43606 • 419-248-4479 • 800-248-4479
Fax No. 419-244-8887 • sales@rowelectrical.com • www.rowelectrical.com



100,000 Sq. Ft. Warehouse
We sell new and used
industrial electrical equipment, including:

- D.C. and A.C. Motors
- D.C. Drives
- A.C. Starters
- Transformers
- Switchgear
- Gear Reducers
- 1 HP Thru 3500 HP Engine-Gen. Sets

CALL 24 HOURS • WE BUY USED ELECTRICAL EQUIPMENT

GRINDING

- GRANULATION/COARSE GRINDING
- PULVERIZING/FINE GRINDING
- CRYOGENIC GRINDING
- SIFTING/CLASSIFYING
- BLENDING/MIXING
- REPACKAGING



AllgrindPlastics
P.O. Box 363
Bloombury, NJ 08804

908-479-4400

web site: www.allgrind.com
e-mail: info@allgrind.com

MN Machinery Network

**We specialize in buying
and selling the following
types of machinery:**

- Injection Molding Machines
- Extruders and Related Recycling Machinery
- Blow Molders
- Auxiliary Equipment
- CNC and Conventional Metal Working Machines
- Water Jets
- And More

Call us at 818-465-6700 for a confidential evaluation of your machinery. We are interested in buying a single piece of machinery or your entire plant.

USED MONTHLY SPECIALS

1460 ton	Krauss Maffei foam molding	2012
500 ton 89 oz	Van Dorn mfg	2002
400 ton 50 oz	Engel	1997
300 ton 23 oz	Nissei FNX	2012
200 ton 15.9 oz	Toyo	1999
176 ton 6.4 oz	ARBURG vertical	2014
150 ton 8.8 oz	Toyo	1998
100 ton 6.1 oz	NISSEI vertical	1999
38 ton 1.3 oz	DEMAG	2001

ROBOT - STAR & YUSHIN AS NEW AS 2012

EXTRUDERS - 3" & 6" DAVIS STANDARD 1997

GRANULATORS - 40 HP, 10 HP, 7.5 HP, 3 HP
RAPID AS NEW AS 2019

DRYER - AEC AND DRI-AIR AS NEW AS 2013

MN Machinery Network

plasticsales@machinerynetwork.com
818-465-6700 www.machinerynetwork.com

Air Cooled Portable Chillers

Reliable and Durable

2-100 ton. in capacity



**24/7
SUPPORT**



Your source for economical and
dependable industrial water chillers.

Learn more: 1.800.473.9178 www.waterchillers.com

**Plastics
HOTLINE**

**The Monthly Marketplace for Plastics
Processing Equipment, Materials,
Supplies and Business Services**

PLASTICS HOTLINE

A RDG Media, Inc. Publication
PO Box 893
Fort Dodge, IA 50501

CALL 586-227-9344

DURABILITY, VERSATILITY & RELIABILITY



DuraVibe™

Monitor Technologies'

Next Generation Vibratory Level Sensors for Powders & Bulk Solids

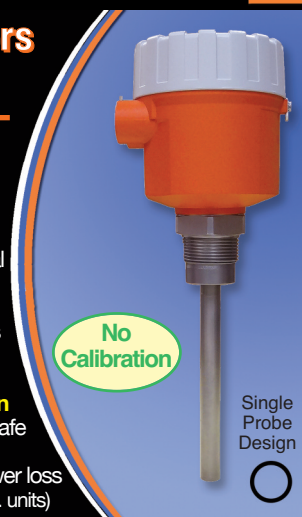


DuraVibe™ Model PZP

- ✓ **Superior durability** with industry-leading probe strength!
- ✓ **Excellent versatility** detects very light to heavy materials
- ✓ Unaffected by varying material compositions (temp, moisture, etc.)
- ✓ **Ultimate hazardous location protection** with intrinsically-safe probe
- ✓ Fail-safe signal if power is lost
- ✓ External status LED (Ord. Loc. units)
- ✓ Pipe extension, cable extension and high-temp units are available

DuraVibe™ Model VibraRod™

- ✓ Versatile & durable, yet economical
- ✓ Unaffected by varying material compositions (temperature, moisture, etc.)
- ✓ Single probe design prevents false signaling from material build-up
- ✓ **Ultimate hazardous location protection** with intrinsically-safe probe
- ✓ Fail-safe signal in case of power loss
- ✓ External status LED (Ord. Loc. units)



Material Control...Use Any Device To View Inventory Levels In Any Silo, Anytime!



Monitor Technologies' **SiloTrack™ CLOUD** web-based application allows you to securely view material inventory data from continuous level sensors and optimize your inventory decisions. **Let us put our solutions to work for you!**

- ✓ Access material levels & reports **any time** and **any place** using **any device** with an Internet connection.
- ✓ Take complete advantage of potential volume discounts by utilizing all available silo storage capacity.
- ✓ Minimize the amount of deliveries & transportation costs.
- ✓ Ensure that the complete load you ordered fits in the silo(s), thereby avoiding material return fees.
- ✓ Collect data to enhance material resource planning, such as calculating reorder points to minimize "downtimes".

1-800-601-5949 or 1-630-365-9403 ▼ www.monitortech.com ▼ monitor@monitortech.com